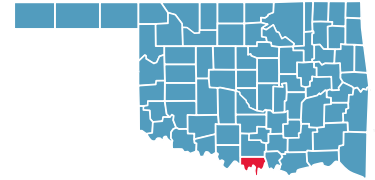


LOVE COUNTY

County Seat: Marietta



Number of Children (2005): 2,062

Number of Poor Children (2004): 403

Children are 22.6% of the county population

Child Poverty Rate: 19.6%

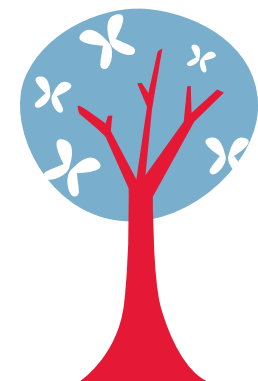
Economic Cluster: #3, Middle

Indicator	Base Data	-	Worsened	Improved	+	Recent Data	Rank
BIRTHWEIGHT							
Low Birthweight (<5.5lbs)	5.9% of live births, 1994-96	-24.0%				7.3% of live births, 2003-05	31
Very Low Birthweight (<3 lbs, 5oz)	0.3% of live births, 1994-96	-163.5%				0.9% of live births, 2003-05	22
BIRTHS TO TEENS							
Births to Young Teens (ages 15-17)	36.5/1,000 girls 15-17, 1994-96				41.3%	21.4/1,000 girls 15-17, 2003-05	28
Births to Older Teens (ages 18-19)	142.2/1,000 girls 18-19, 1994-96				27.9%	102.6/1,000 girls 18-19, 2003-05	38
Births to Teens (ages 15-19)	64.1/1,000 girls 15-19, 1994-96				21.3%	50.5/1,000 girls 15-19, 2003-05	25
CHILD ABUSE & NEGLECT							
	16.7 confirmed/1,000 children, FY 1995-97	-25.8%				21.0 confirmed/1,000 children, FY 2004-06	55
HIGH SCHOOL DROPOUTS							
	0.8% youth <age 19, SY 2001/02-2003/04	-107.6%				1.6% youth <age 19, SY 2003/04-2005/06	19
VIOLENT CRIME ARRESTS							
	64.4/100,000 youths 10-17, 1994-96				0.6%	64.1/100,000 youths 10-17, 2003-05	18
MORTALITY							
Infant Mortality (<age 1)	3.5/1,000 live births, 1994-96				12.2%	3.0/1,000 live births, 2003-05	6
Child Death (ages 1-14)	39.5/100,000 children 1-14, 1994-96				47.0%	20.9/100,000 children 1-14, 2003-05	22
Teen Death (ages 15-19)	102.6/100,000 teens 15-19, 1994-96	-51.9%				155.8/100,000 teens 15-19, 2003-05	65
Child & Teen Death (ages 1-19)	57.0/100,000 youth 1-19, 1994-96	-4.7%				59.7/100,000 youth 1-19, 2003-05	49
ECONOMIC CLUSTER							
	161 Economic Index, 1994-96				7.5%	149 Economic Index, 2003-05	38

■ state change ■ county change ### = zero base - cannot calculate change County Rank (1 = best) (77 = worst)
 Changes of more than 100%—positive or negative—are graphed with broken bar *Indicates a tie with at least one other county.

CHILDHOOD STRESS INDEX

Category / Indicator	Number	Rate	Rank
BIRTH / GENETIC / BIOLOGICAL			
Very Low Birthweight (2003-05)	1 avg annual	0.9%	22
Autism Reported on IEPs (ages 3-21, FFY 2005-07)	1 avg annual	0.6/1,000	8
ENVIRONMENTAL FACTORS			
Poverty (ages 0-17, 2004)	403	19.6%	28*
Unemployment (2003-05)	n/a	5.1%	47
EXPOSURE TO TRAUMA			
FEMA Disaster Declarations (Nov 2000-Aug 2007)	7	0.3/1,000 children	21
Adverse Childhood Experiences (ACE Index, 2006/07 Kids Count)	38.2	n/a	47
ACCESS TO TREATMENT			
Untreated by DMHSAS, OJA or Medicaid (ages 9-17, FY 2005-06)			
Untreated Mentally Ill & Substance-Abusers	141 avg annual	60.0%	41
Untreated Serious Emotional Disturbance	53 avg annual	36.4%	
Suicide (ages 5-24, 2003-05)	0 avg annual	14.1/100,000	70



Childhood Stress Rank

32

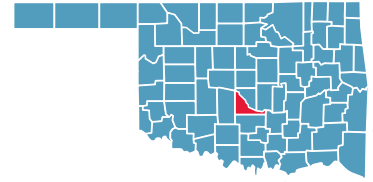
*Indicates a tie with at least one other county.

0.0%* or 0* indicates that, on average, services were provided to numbers of young clients which appear to serve all of the estimated need (prevalence) in the county



MCCLAIN COUNTY

County Seat: Purcell



Number of Children (2005): 7,060

Number of Poor Children (2004): 1,035

Children are 23.5% of the county population

Child Poverty Rate: 14.7%

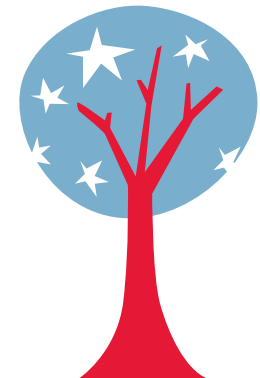
Economic Cluster: #1, Wealthiest

Indicator	Base Data	-	Worsened	Improved	+	Recent Data	Rank
BIRTHWEIGHT							
Low Birthweight (<5.5lbs)	4.8% of live births, 1994-96	-83.7%				8.9% of live births, 2003-05	65
Very Low Birthweight (<3 lbs, 5oz)	0.4% of live births, 1994-96	-263.6%				1.6% of live births, 2003-05	62
BIRTHS TO TEENS							
Births to Young Teens (ages 15-17)	20.4/1,000 girls 15-17, 1994-96				19.8%	16.4/1,000 girls 15-17, 2003-05	13
Births to Older Teens (ages 18-19)	74.7/1,000 girls 18-19, 1994-96	-2.9%				76.9/1,000 girls 18-19, 2003-05	20
Births to Teens (ages 15-19)	38.3/1,000 girls 15-19, 1994-96	-2.7%				39.4/1,000 girls 15-19, 2003-05	18
CHILD ABUSE & NEGLECT							
	16.2 confirmed/1,000 children, FY 1995-97	-20.6%				19.5 confirmed/1,000 children, FY 2004-06	50
HIGH SCHOOL DROPOUTS							
	2.9% youth <age 19, SY 2001/02-2003/04				21.8%	2.3% youth <age 19, SY 2003/04-2005/06	31
VIOLENT CRIME ARRESTS							
	42.4/100,000 youths 10-17, 1994-96	-91.1%				81.0/100,000 youths 10-17, 2003-05	24
MORTALITY							
Infant Mortality (<age 1)	5.4/1,000 live births, 1994-96	-68.4%				9.0/1,000 live births, 2003-05	55
Child Death (ages 1-14)	37.7/100,000 children 1-14, 1994-96				17.6%	31.0/100,000 children 1-14, 2003-05	43
Teen Death (ages 15-19)	98.5/100,000 teens 15-19, 1994-96				21.0%	77.8/100,000 teens 15-19, 2003-05	30
Child & Teen Death (ages 1-19)	54.5/100,000 youth 1-19, 1994-96				18.6%	44.3/100,000 youth 1-19, 2003-05	32
ECONOMIC CLUSTER							
	55 Economic Index, 1994-96				0.0%	55 Economic Index, 2003-05	8

■ state change ■ county change ### = zero base - cannot calculate change County Rank (1 = best) (77 = worst)
 Changes of more than 100%—positive or negative—are graphed with broken bar *Indicates a tie with at least one other county.

CHILDHOOD STRESS INDEX

Category / Indicator	Number	Rate	Rank
BIRTH / GENETIC / BIOLOGICAL			
Very Low Birthweight (2003-05)	6 avg annual	1.6%	62
Autism Reported on IEPs (ages 3-21, FFY 2005-07)	10 avg annual	1.3/1,000	31
ENVIRONMENTAL FACTORS			
Poverty (ages 0-17, 2004)	1,035	14.7%	7
Unemployment (2003-05)	n/a	4.3%	28
EXPOSURE TO TRAUMA			
FEMA Disaster Declarations (Nov 2000-Aug 2007)	12	0.6/1,000 children	38
Adverse Childhood Experiences (ACE Index, 2006/07 Kids Count)	34.3	n/a	42
ACCESS TO TREATMENT			
Untreated by DMHSAS, OJA or Medicaid (ages 9-17, FY 2005-06)			
Untreated Mentally Ill & Substance-Abusers	567 avg annual	73.6%	69
Untreated Serious Emotional Disturbance	285 avg annual	59.5%	
Suicide (ages 5-24, 2003-05)	0 avg annual	4.1/100,000	33



Childhood Stress Rank

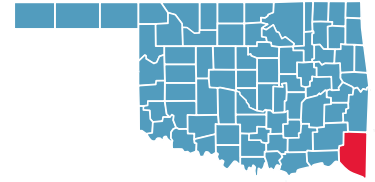
25

*Indicates a tie with at least one other county.

0.0%* or 0* indicates that, on average, services were provided to numbers of young clients which appear to serve all of the estimated need (prevalence) in the county

MCCURTAIN COUNTY

County Seat: **Idabel**



Number of Children (2005): **8,865**

Number of Poor Children (2004): **2,660**

Children are **26.1%** of the county population

Child Poverty Rate: **30.1%**

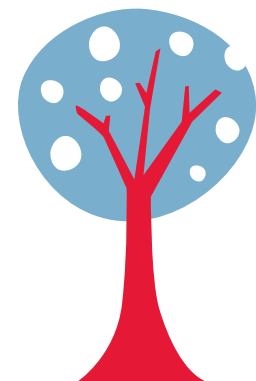
Economic Cluster: **#5, Poorest**

Indicator	Base Data	-	Worsened	Improved	+	Recent Data	Rank
BIRTHWEIGHT							
Low Birthweight (<5.5lbs)	7.2% of live births, 1994-96	-11.7%				8.1% of live births, 2003-05	51
Very Low Birthweight (<3 lbs, 5oz)	0.8% of live births, 1994-96	-29.2%				1.0% of live births, 2003-05	29
BIRTHS TO TEENS							
Births to Young Teens (ages 15-17)	43.8/1,000 girls 15-17, 1994-96				9.5%	39.7/1,000 girls 15-17, 2003-05	69
Births to Older Teens (ages 18-19)	176.2/1,000 girls 18-19, 1994-96				13.0%	153.3/1,000 girls 18-19, 2003-05	75
Births to Teens (ages 15-19)	88.3/1,000 girls 15-19, 1994-96				9.1%	80.3/1,000 girls 15-19, 2003-05	74
CHILD ABUSE & NEGLECT							
	18.1 confirmed/1,000 children, FY 1995-97	-39.1%				25.2 confirmed/1,000 children, FY 2004-06	61
HIGH SCHOOL DROPOUTS							
	2.2% youth <age 19, SY 2001/02-2003/04				24.1%	1.7% youth <age 19, SY 2003/04-2005/06	20
VIOLENT CRIME ARRESTS							
	387.8/100,000 youths 10-17, 1994-96				67.3%	126.7/100,000 youths 10-17, 2003-05	42
MORTALITY							
Infant Mortality (<age 1)	7.7/1,000 live births, 1994-96	-19.9%				9.3/1,000 live births, 2003-05	59
Child Death (ages 1-14)	21.4/100,000 children 1-14, 1994-96	-124.5%				48.0/100,000 children 1-14, 2003-05	61
Teen Death (ages 15-19)	153.2/100,000 teens 15-19, 1994-96				39.5%	92.7/100,000 teens 15-19, 2003-05	43
Child & Teen Death (ages 1-19)	56.5/100,000 youth 1-19, 1994-96	-6.1%				59.9/100,000 youth 1-19, 2003-05	50
ECONOMIC CLUSTER							
	264 Economic Index, 1994-96				4.5%	252 Economic Index, 2003-05	68*

■ state change ■ county change ### = zero base - cannot calculate change County Rank (1 = best) (77 = worst)
 Changes of more than 100%—positive or negative—are graphed with broken bar *Indicates a tie with at least one other county.

CHILDHOOD STRESS INDEX

Category / Indicator	Number	Rate	Rank
BIRTH / GENETIC / BIOLOGICAL			
Very Low Birthweight (2003-05)	5 avg annual	1.0%	29
Autism Reported on IEPs (ages 3-21, FFY 2005-07)	7 avg annual	0.7/1,000	12
ENVIRONMENTAL FACTORS			
Poverty (ages 0-17, 2004)	2,660	30.1%	74
Unemployment (2003-05)	n/a	8.2%	72*
EXPOSURE TO TRAUMA			
FEMA Disaster Declarations (Nov 2000-Aug 2007)	7	1.3/1,000 children	57
Adverse Childhood Experiences (ACE Index, 2006/07 Kids Count)	54.5	n/a	70
ACCESS TO TREATMENT			
Untreated by DMHSAS, OJA or Medicaid (ages 9-17, FY 2005-06)			
Untreated Mentally Ill & Substance-Abusers	486 avg annual	50.9%	23
Untreated Serious Emotional Disturbance	154 avg annual	26.0%	
Suicide (ages 5-24, 2003-05)	1 avg annual	10.5/100,000	60



Childhood Stress Rank

60

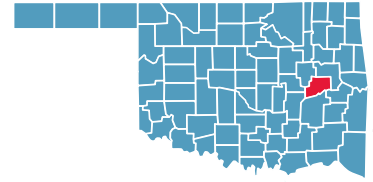
*Indicates a tie with at least one other county.

0.0%* or 0* indicates that, on average, services were provided to numbers of young clients which appear to serve all of the estimated need (prevalence) in the county



MCINTOSH COUNTY

County Seat: Eufaula



Number of Children (2005): 4,135

Number of Poor Children (2004): 1,135

Children are 20.8% of the county population

Child Poverty Rate: 27.5%

Economic Cluster: #5, Poorest

Indicator	Base Data	-	Worsened	Improved	+	Recent Data	Rank
BIRTHWEIGHT							
Low Birthweight (<5.5lbs)	6.6% of live births, 1994-96	-14.5%				7.6% of live births, 2003-05	36
Very Low Birthweight (<3 lbs, 5oz)	0.8% of live births, 1994-96	-214.1%				2.5% of live births, 2003-05	75
BIRTHS TO TEENS							
Births to Young Teens (ages 15-17)	33.6/1,000 girls 15-17, 1994-96				43.7%	18.9/1,000 girls 15-17, 2003-05	19
Births to Older Teens (ages 18-19)	152.8/1,000 girls 18-19, 1994-96				33.5%	101.6/1,000 girls 18-19, 2003-05	36
Births to Teens (ages 15-19)	69.1/1,000 girls 15-19, 1994-96				26.7%	50.7/1,000 girls 15-19, 2003-05	26
CHILD ABUSE & NEGLECT							
	27.4 confirmed/1,000 children, FY 1995-97				0.1%	27.4 confirmed/1,000 children, FY 2004-06	70
HIGH SCHOOL DROPOUTS							
	2.5% youth <age 19, SY 2001/02-2003/04				6.5%	2.3% youth <age 19, SY 2003/04-2005/06	33
VIOLENT CRIME ARRESTS							
	235.1/100,000 youths 10-17, 1994-96				51.3%	114.5/100,000 youths 10-17, 2003-05	39
MORTALITY							
Infant Mortality (<age 1)	9.4/1,000 live births, 1994-96	-30.9%				12.3/1,000 live births, 2003-05	71
Child Death (ages 1-14)	0.0/100,000 children 1-14, 1994-96				###	52.0/100,000 children 1-14, 2003-05	65
Teen Death (ages 15-19)	53.3/100,000 teens 15-19, 1994-96	-44.3%				76.9/100,000 teens 15-19, 2003-05	29
Child & Teen Death (ages 1-19)	14.9/100,000 youth 1-19, 1994-96	-297.3%				59.2/100,000 youth 1-19, 2003-05	48
ECONOMIC CLUSTER							
	248 Economic Index, 1994-96	-6.0%				263 Economic Index, 2003-05	71

■ state change

■ county change

= zero base - cannot calculate change

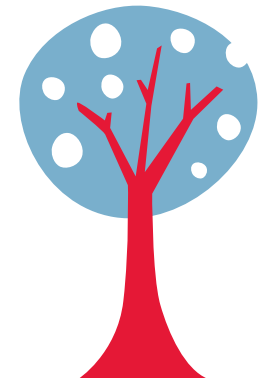
County Rank (1 = best) (77 = worst)

Changes of more than 100%—positive or negative—are graphed with broken bar

*Indicates a tie with at least one other county.

CHILDHOOD STRESS INDEX

Category / Indicator	Number	Rate	Rank
BIRTH / GENETIC / BIOLOGICAL			
Very Low Birthweight (2003-05)	5 avg annual	2.5%	75
Autism Reported on IEPs (ages 3-21, FFY 2005-07)	6 avg annual	1.4/1,000	39
ENVIRONMENTAL FACTORS			
Poverty (ages 0-17, 2004)	1,135	27.5%	68
Unemployment (2003-05)	n/a	6.8%	68
EXPOSURE TO TRAUMA			
FEMA Disaster Declarations (Nov 2000-Aug 2007)	8	0.5/1,000 children	33
Adverse Childhood Experiences (ACE Index, 2006/07 Kids Count)	52.4	n/a	67
ACCESS TO TREATMENT			
Untreated by DMHSAS, OJA or Medicaid (ages 9-17, FY 2005-06)			
Untreated Mentally Ill & Substance-Abusers	246 avg annual	54.5%	31
Untreated Serious Emotional Disturbance	89 avg annual	31.5%	
Suicide (ages 5-24, 2003-05)	0 avg annual	7.0/100,000	47



Childhood Stress Rank

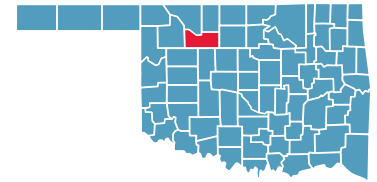
76

*Indicates a tie with at least one other county.

0.0%* or 0* indicates that, on average, services were provided to numbers of young clients which appear to serve all of the estimated need (prevalence) in the county

MAJOR COUNTY

County Seat: **Fairview**



Number of Children (2005): **1,498**

Number of Poor Children (2004): **224**

Children are **20.3%** of the county population

Child Poverty Rate: **15.0%**

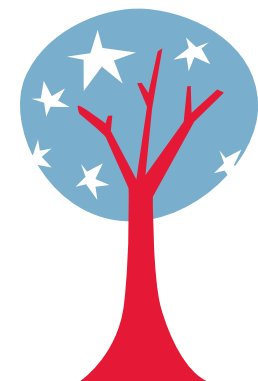
Economic Cluster: **#1, Wealthiest**

Indicator	Base Data	-	Worsened	Improved	+	Recent Data	Rank
BIRTHWEIGHT							
Low Birthweight (<5.5lbs)	2.3% of live births, 1994-96	-422.2%				12.0% of live births, 2003-05	76
Very Low Birthweight (<3 lbs, 5oz)	0.5% of live births, 1994-96	-170.1%				1.2% of live births, 2003-05	49
BIRTHS TO TEENS							
Births to Young Teens (ages 15-17)	16.7/1,000 girls 15-17, 1994-96				47.4%	8.8/1,000 girls 15-17, 2003-05	2
Births to Older Teens (ages 18-19)	100.0/1,000 girls 18-19, 1994-96				36.6%	63.4/1,000 girls 18-19, 2003-05	11
Births to Teens (ages 15-19)	42.3/1,000 girls 15-19, 1994-96				31.4%	29.0/1,000 girls 15-19, 2003-05	6
CHILD ABUSE & NEGLECT	13.6 confirmed/1,000 children, FY 1995-97	-18.8%				16.1 confirmed/1,000 children, FY 2004-06	32
HIGH SCHOOL DROPOUTS	1.5% youth <age 19, SY 2001/02-2003/04				19.6%	1.2% youth <age 19, SY 2003/04-2005/06	11
VIOLENT CRIME ARRESTS	237.7/100,000 youths 10-17, 1994-96				100.0%	0.0/100,000 youths 10-17, 2003-05	1*
MORTALITY							
Infant Mortality (<age 1)	0.0/1,000 live births, 1994-96				###	8.3/1,000 live births, 2003-05	49
Child Death (ages 1-14)	60.7/100,000 children 1-14, 1994-96				100.0%	0.0/100,000 children 1-14, 2003-05	1*
Teen Death (ages 15-19)	64.4/100,000 teens 15-19, 1994-96				1.6%	63.4/100,000 teens 15-19, 2003-05	21
Child & Teen Death (ages 1-19)	61.6/100,000 youth 1-19, 1994-96				67.9%	19.7/100,000 youth 1-19, 2003-05	4
ECONOMIC CLUSTER	50 Economic Index, 1994-96	-46.0%				73 Economic Index, 2003-05	13

■ state change ■ county change ### = zero base - cannot calculate change County Rank (1 = best) (77 = worst)
 Changes of more than 100%—positive or negative—are graphed with broken bar *Indicates a tie with at least one other county.

CHILDHOOD STRESS INDEX

Category / Indicator	Number	Rate	Rank
BIRTH / GENETIC / BIOLOGICAL			
Very Low Birthweight (2003-05)	1 avg annual	1.2%	49
Autism Reported on IEPs (ages 3-21, FFY 2005-07)	5 avg annual	2.8/1,000	71
ENVIRONMENTAL FACTORS			
Poverty (ages 0-17, 2004)	224	15.0%	9
Unemployment (2003-05)	n/a	3.0%	3*
EXPOSURE TO TRAUMA			
FEMA Disaster Declarations (Nov 2000-Aug 2007)	6	0.2/1,000 children	18
Adverse Childhood Experiences (ACE Index, 2006/07 Kids Count)	17.6	n/a	9
ACCESS TO TREATMENT			
Untreated by DMHSAS, OJA or Medicaid (ages 9-17, FY 2005-06)			
Untreated Mentally Ill & Substance-Abusers	100 avg annual	56.3%	32*
Untreated Serious Emotional Disturbance	37 avg annual	32.9%	
Suicide (ages 5-24, 2003-05)	0 avg annual	0.0/100,000	1*



Childhood Stress Rank

6

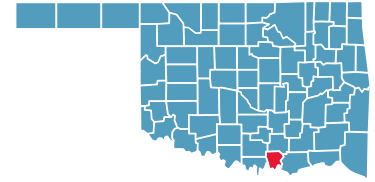
*Indicates a tie with at least one other county.

0.0%* or 0* indicates that, on average, services were provided to numbers of young clients which appear to serve all of the estimated need (prevalence) in the county



MARSHALL COUNTY

County Seat: **Madill**



Number of Children (2005): **3,168**

Number of Poor Children (2004): **664**

Children are **21.9%** of the county population

Child Poverty Rate: **21.2%**

Economic Cluster: **#5, Poorest**

Indicator	Base Data	-	Worsened	Improved	+	Recent Data	Rank
BIRTHWEIGHT							
Low Birthweight (<5.5lbs)	8.5% of live births, 1994-96					16.0%	7.1% of live births, 2003-05 29
Very Low Birthweight (<3 lbs, 5oz)	1.1% of live births, 1994-96					22.0%	0.8% of live births, 2003-05 19
BIRTHS TO TEENS							
Births to Young Teens (ages 15-17)	38.7/1,000 girls 15-17, 1994-96					12.7%	33.8/1,000 girls 15-17, 2003-05 57
Births to Older Teens (ages 18-19)	132.7/1,000 girls 18-19, 1994-96	-4.1%					138.2/1,000 girls 18-19, 2003-05 72
Births to Teens (ages 15-19)	72.6/1,000 girls 15-19, 1994-96					1.2%	71.7/1,000 girls 15-19, 2003-05 68
CHILD ABUSE & NEGLECT							
	17.3 confirmed/1,000 children, FY 1995-97	-3.2%					17.8 confirmed/1,000 children, FY 2004-06 42
HIGH SCHOOL DROPOUTS							
	1.1% youth <age 19, SY 2001/02-2003/04	-69.3%					1.8% youth <age 19, SY 2003/04-2005/06 22
VIOLENT CRIME ARRESTS							
	217.7/100,000 youths 10-17, 1994-96					57.3%	93.0/100,000 youths 10-17, 2003-05 28
MORTALITY							
Infant Mortality (<age 1)	10.9/1,000 live births, 1994-96					68.8%	3.4/1,000 live births, 2003-05 8
Child Death (ages 1-14)	65.2/100,000 children 1-14, 1994-96					57.3%	27.9/100,000 children 1-14, 2003-05 34
Teen Death (ages 15-19)	113.9/100,000 teens 15-19, 1994-96					1.4%	112.3/100,000 teens 15-19, 2003-05 50
Child & Teen Death (ages 1-19)	79.9/100,000 youth 1-19, 1994-96					36.4%	50.8/100,000 youth 1-19, 2003-05 39
ECONOMIC CLUSTER							
	177 Economic Index, 1994-96	-14.1%					202 Economic Index, 2003-05 54

■ state change

■ county change

= zero base - cannot calculate change

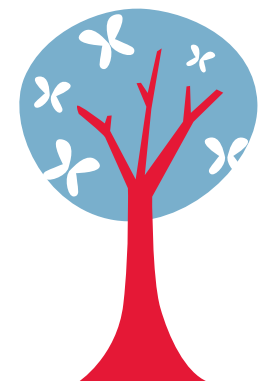
County Rank (1 = best) (77 = worst)

Changes of more than 100%—positive or negative—are graphed with broken bar

*Indicates a tie with at least one other county.

CHILDHOOD STRESS INDEX

Category / Indicator	Number	Rate	Rank
BIRTH / GENETIC / BIOLOGICAL			
Very Low Birthweight (2003-05)	2 avg annual	0.8%	19
Autism Reported on IEPs (ages 3-21, FFY 2005-07)	4 avg annual	1.2/1,000	25
ENVIRONMENTAL FACTORS			
Poverty (ages 0-17, 2004)	664	21.2%	40
Unemployment (2003-05)	n/a	4.4%	29*
EXPOSURE TO TRAUMA			
FEMA Disaster Declarations (Nov 2000-Aug 2007)	7	0.5/1,000 children	31
Adverse Childhood Experiences (ACE Index, 2006/07 Kids Count)	38.0	n/a	46
ACCESS TO TREATMENT			
Untreated by DMHSAS, OJA or Medicaid (ages 9-17, FY 2005-06)			
Untreated Mentally Ill & Substance-Abusers	179 avg annual	53.2%	25
Untreated Serious Emotional Disturbance	60 avg annual	28.7%	
Suicide (ages 5-24, 2003-05)	0 avg annual	9.0/100,000	53



Childhood Stress Rank

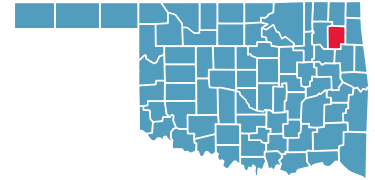
31

*Indicates a tie with at least one other county.

0.0%* or 0* indicates that, on average, services were provided to numbers of young clients which appear to serve all of the estimated need (prevalence) in the county

MAYES COUNTY

County Seat: Pryor



Number of Children (2005): 9,490

Number of Poor Children (2004): 2,143

Children are 24.0% of the county population

Child Poverty Rate: 22.9%

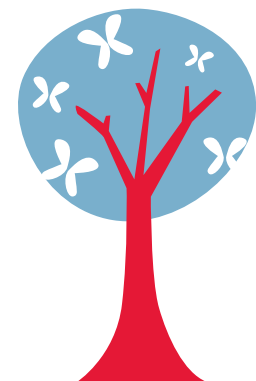
Economic Cluster: #5, Poorest

Indicator	Base Data	-	Worsened	Improved	+	Recent Data	Rank
BIRTHWEIGHT							
Low Birthweight (<5.5lbs)	7.4% of live births, 1994-96					4.9%	7.1% of live births, 2003-05 28
Very Low Birthweight (<3 lbs, 5oz)	1.5% of live births, 1994-96					34.6%	1.0% of live births, 2003-05 24
BIRTHS TO TEENS							
Births to Young Teens (ages 15-17)	48.9/1,000 girls 15-17, 1994-96					43.7%	27.5/1,000 girls 15-17, 2003-05 40
Births to Older Teens (ages 18-19)	131.0/1,000 girls 18-19, 1994-96					20.3%	104.4/1,000 girls 18-19, 2003-05 42
Births to Teens (ages 15-19)	78.1/1,000 girls 15-19, 1994-96					29.3%	55.2/1,000 girls 15-19, 2003-05 36
CHILD ABUSE & NEGLECT							
	18.1 confirmed/1,000 children, FY 1995-97					5.3%	17.2 confirmed/1,000 children, FY 2004-06 38
HIGH SCHOOL DROPOUTS							
	3.5% youth <age 19, SY 2001/02-2003/04					17.8%	2.9% youth <age 19, SY 2003/04-2005/06 43
VIOLENT CRIME ARRESTS							
	69.4/100,000 youths 10-17, 1994-96	-108.4%					144.5/100,000 youths 10-17, 2003-05 47
MORTALITY							
Infant Mortality (<age 1)	12.7/1,000 live births, 1994-96					54.5%	5.8/1,000 live births, 2003-05 25
Child Death (ages 1-14)	44.8/100,000 children 1-14, 1994-96					59.7%	18.1/100,000 children 1-14, 2003-05 17
Teen Death (ages 15-19)	63.8/100,000 teens 15-19, 1994-96	-81.5%					115.9/100,000 teens 15-19, 2003-05 52
Child & Teen Death (ages 1-19)	49.7/100,000 youth 1-19, 1994-96					8.5%	45.5/100,000 youth 1-19, 2003-05 33
ECONOMIC CLUSTER							
	161 Economic Index, 1994-96	-20.5%					194 Economic Index, 2003-05 51

■ state change ■ county change ### = zero base - cannot calculate change County Rank (1 = best) (77 = worst)
 Changes of more than 100%—positive or negative—are graphed with broken bar *Indicates a tie with at least one other county.

CHILDHOOD STRESS INDEX

Category / Indicator	Number	Rate	Rank
BIRTH / GENETIC / BIOLOGICAL			
Very Low Birthweight (2003-05)	5 avg annual	1.0%	24
Autism Reported on IEPs (ages 3-21, FFY 2005-07)	12 avg annual	1.2/1,000	24
ENVIRONMENTAL FACTORS			
Poverty (ages 0-17, 2004)	2,143	22.9%	46
Unemployment (2003-05)	n/a	6.6%	67
EXPOSURE TO TRAUMA			
FEMA Disaster Declarations (Nov 2000-Aug 2007)	6	1.6/1,000 children	64
Adverse Childhood Experiences (ACE Index, 2006/07 Kids Count)	33.8	n/a	40
ACCESS TO TREATMENT			
Untreated by DMHSAS, OJA or Medicaid (ages 9-17, FY 2005-06)			
Untreated Mentally Ill & Substance-Abusers	549 avg annual	52.6%	21*
Untreated Serious Emotional Disturbance	164 avg annual	25.2%	
Suicide (ages 5-24, 2003-05)	1 avg annual	6.3/100,000	43



Childhood Stress Rank

tie for 28

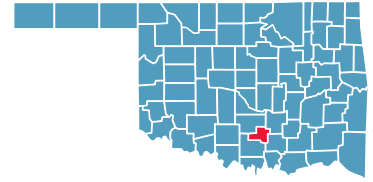
*Indicates a tie with at least one other county.

0.0%* or 0* indicates that, on average, services were provided to numbers of young clients which appear to serve all of the estimated need (prevalence) in the county



MURRAY COUNTY

County Seat: **Sulphur**



Number of Children (2005): **2,823**

Number of Poor Children (2004): **571**

Children are **21.9%** of the county population

Child Poverty Rate: **20.2%**

Economic Cluster: **#3, Middle**

Indicator	Base Data	-	Worsened	Improved	+	Recent Data	Rank
BIRTHWEIGHT							
Low Birthweight (<5.5lbs)	7.9% of live births, 1994-96	-15.2%				9.1% of live births, 2003-05	68
Very Low Birthweight (<3 lbs, 5oz)	1.7% of live births, 1994-96	-13.6%				1.9% of live births, 2003-05	72
BIRTHS TO TEENS							
Births to Young Teens (ages 15-17)	35.8/1,000 girls 15-17, 1994-96	-23.6%				44.3/1,000 girls 15-17, 2003-05	73
Births to Older Teens (ages 18-19)	145.8/1,000 girls 18-19, 1994-96				29.2%	103.3/1,000 girls 18-19, 2003-05	39
Births to Teens (ages 15-19)	72.4/1,000 girls 15-19, 1994-96				4.1%	69.5/1,000 girls 15-19, 2003-05	64
CHILD ABUSE & NEGLECT							
	16.5 confirmed/1,000 children, FY 1995-97	-28.9%				21.2 confirmed/1,000 children, FY 2004-06	56
HIGH SCHOOL DROPOUTS							
	1.9% youth <age 19, SY 2001/02-2003/04	-4.3%				1.9% youth <age 19, SY 2003/04-2005/06	27
VIOLENT CRIME ARRESTS							
	206.6/100,000 youths 10-17, 1994-96				24.1%	156.9/100,000 youths 10-17, 2003-05	51
MORTALITY							
Infant Mortality (<age 1)	9.6/1,000 live births, 1994-96				33.7%	6.3/1,000 live births, 2003-05	28
Child Death (ages 1-14)	41.7/100,000 children 1-14, 1994-96				27.8%	30.1/100,000 children 1-14, 2003-05	42
Teen Death (ages 15-19)	114.4/100,000 teens 15-19, 1994-96	-48.1%				169.3/100,000 teens 15-19, 2003-05	68
Child & Teen Death (ages 1-19)	61.1/100,000 youth 1-19, 1994-96	-9.0%				66.7/100,000 youth 1-19, 2003-05	61
ECONOMIC CLUSTER							
	202 Economic Index, 1994-96				28.7%	144 Economic Index, 2003-05	35

■ state change

■ county change

= zero base - cannot calculate change

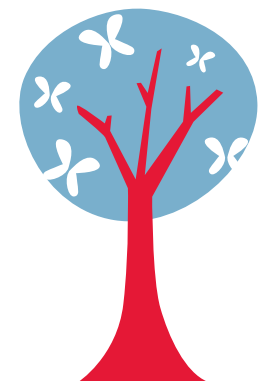
County Rank (1 = best) (77 = worst)

Changes of more than 100%—positive or negative—are graphed with broken bar

*Indicates a tie with at least one other county.

CHILDHOOD STRESS INDEX

Category / Indicator	Number	Rate	Rank
BIRTH / GENETIC / BIOLOGICAL			
Very Low Birthweight (2003-05)	3 avg annual	1.9%	72
Autism Reported on IEPs (ages 3-21, FFY 2005-07)	2 avg annual	0.6/1,000	7
ENVIRONMENTAL FACTORS			
Poverty (ages 0-17, 2004)	571	20.2%	32*
Unemployment (2003-05)	n/a	4.4%	29*
EXPOSURE TO TRAUMA			
FEMA Disaster Declarations (Nov 2000-Aug 2007)	6	0.5/1,000 children	32
Adverse Childhood Experiences (ACE Index, 2006/07 Kids Count)	40.8	n/a	52
ACCESS TO TREATMENT			
Untreated by DMHSAS, OJA or Medicaid (ages 9-17, FY 2005-06)			
Untreated Mentally Ill & Substance-Abusers	172 avg annual	58.1%	37
Untreated Serious Emotional Disturbance	64 avg annual	34.5%	
Suicide (ages 5-24, 2003-05)	0 avg annual	0.0/100,000	1*



Childhood Stress Rank

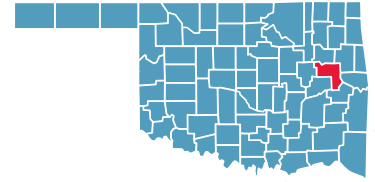
tie for 37

*Indicates a tie with at least one other county.

0.0%* or 0* indicates that, on average, services were provided to numbers of young clients which appear to serve all of the estimated need (prevalence) in the county

MUSKOGEE COUNTY

County Seat: Muskogee



Number of Children (2005): 16,853

Number of Poor Children (2004): 4,294

Children are 23.9% of the county population

Child Poverty Rate: 25.8%

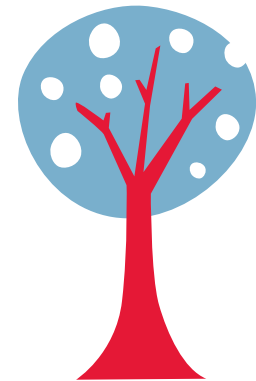
Economic Cluster: #5, Poorest

Indicator	Base Data	-	Worsened	Improved	+	Recent Data	Rank
BIRTHWEIGHT							
Low Birthweight (<5.5lbs)	7.6% of live births, 1994-96	-7.1%				8.1% of live births, 2003-05	52
Very Low Birthweight (<3 lbs, 5oz)	1.3% of live births, 1994-96				1.7%	1.3% of live births, 2003-05	55
BIRTHS TO TEENS							
Births to Young Teens (ages 15-17)	51.6/1,000 girls 15-17, 1994-96				34.3%	33.9/1,000 girls 15-17, 2003-05	58
Births to Older Teens (ages 18-19)	147.2/1,000 girls 18-19, 1994-96				19.5%	118.4/1,000 girls 18-19, 2003-05	57
Births to Teens (ages 15-19)	86.5/1,000 girls 15-19, 1994-96				21.3%	68.1/1,000 girls 15-19, 2003-05	59
CHILD ABUSE & NEGLECT							
	22.2 confirmed/1,000 children, FY 1995-97				27.5%	16.1 confirmed/1,000 children, FY 2004-06	31
HIGH SCHOOL DROPOUTS							
	2.8% youth <age 19, SY 2001/02-2003/04	-20.5%				3.4% youth <age 19, SY 2003/04-2005/06	56
VIOLENT CRIME ARRESTS							
	572.1/100,000 youths 10-17, 1994-96				64.5%	203.3/100,000 youths 10-17, 2003-05	64
MORTALITY							
Infant Mortality (<age 1)	6.7/1,000 live births, 1994-96				19.3%	5.4/1,000 live births, 2003-05	18
Child Death (ages 1-14)	26.9/100,000 children 1-14, 1994-96	-30.3%				35.0/100,000 children 1-14, 2003-05	51
Teen Death (ages 15-19)	118.9/100,000 teens 15-19, 1994-96				54.1%	54.6/100,000 teens 15-19, 2003-05	15
Child & Teen Death (ages 1-19)	51.1/100,000 youth 1-19, 1994-96				21.2%	40.3/100,000 youth 1-19, 2003-05	26
ECONOMIC CLUSTER							
	223 Economic Index, 1994-96	-1.3%				226 Economic Index, 2003-05	63

■ state change ■ county change ### = zero base - cannot calculate change County Rank (1 = best) (77 = worst)
 Changes of more than 100%—positive or negative—are graphed with broken bar *Indicates a tie with at least one other county.

CHILDHOOD STRESS INDEX

Category / Indicator	Number	Rate	Rank
BIRTH / GENETIC / BIOLOGICAL			
Very Low Birthweight (2003-05)	13 avg annual	1.3%	55
Autism Reported on IEPs (ages 3-21, FFY 2005-07)	52 avg annual	2.9/1,000	72
ENVIRONMENTAL FACTORS			
Poverty (ages 0-17, 2004)	4,294	25.8%	60
Unemployment (2003-05)	n/a	6.6%	66
EXPOSURE TO TRAUMA			
FEMA Disaster Declarations (Nov 2000-Aug 2007)	9	1.9/1,000 children	67
Adverse Childhood Experiences (ACE Index, 2006/07 Kids Count)	44.2	n/a	60
ACCESS TO TREATMENT			
Untreated by DMHSAS, OJA or Medicaid (ages 9-17, FY 2005-06)			
Untreated Mentally Ill & Substance-Abusers	869 avg annual	49.1%	21*
Untreated Serious Emotional Disturbance	292 avg annual	26.5%	
Suicide (ages 5-24, 2003-05)	1 avg annual	3.5/100,000	30



Childhood Stress Rank

67

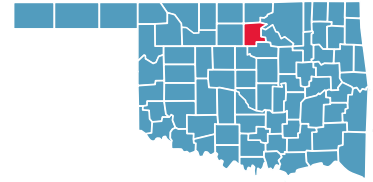
*Indicates a tie with at least one other county.

0.0%* or 0* indicates that, on average, services were provided to numbers of young clients which appear to serve all of the estimated need (prevalence) in the county



NOBLE COUNTY

County Seat: Perry



Number of Children (2005): 2,647

Number of Poor Children (2004): 477

Children are 23.6% of the county population

Child Poverty Rate: 18.1%

Economic Cluster: #2, Wealthier

Indicator	Base Data	-	Worsened	Improved	+	Recent Data	Rank	
BIRTHWEIGHT								
Low Birthweight (<5.5lbs)	7.2% of live births, 1994-96					40.5%	4.3% of live births, 2003-05	4
Very Low Birthweight (<3 lbs, 5oz)	0.2% of live births, 1994-96	-87.8%					0.5% of live births, 2003-05	7
BIRTHS TO TEENS								
Births to Young Teens (ages 15-17)	36.9/1,000 girls 15-17, 1994-96					51.7%	17.8/1,000 girls 15-17, 2003-05	17
Births to Older Teens (ages 18-19)	121.6/1,000 girls 18-19, 1994-96					43.0%	69.3/1,000 girls 18-19, 2003-05	16
Births to Teens (ages 15-19)	67.0/1,000 girls 15-19, 1994-96					44.8%	37.0/1,000 girls 15-19, 2003-05	13
CHILD ABUSE & NEGLECT	11.9 confirmed/1,000 children, FY 1995-97	-37.5%					16.3 confirmed/1,000 children, FY 2004-06	35
HIGH SCHOOL DROPOUTS	1.6% youth <age 19, SY 2001/02-2003/04					28.5%	1.1% youth <age 19, SY 2003/04-2005/06	9
VIOLENT CRIME ARRESTS	247.1/100,000 youths 10-17, 1994-96					78.6%	53.0/100,000 youths 10-17, 2003-05	14
MORTALITY								
Infant Mortality (<age 1)	2.4/1,000 live births, 1994-96	-181.8%					6.8/1,000 live births, 2003-05	33
Child Death (ages 1-14)	41.2/100,000 children 1-14, 1994-96					60.4%	16.3/100,000 children 1-14, 2003-05	14
Teen Death (ages 15-19)	0.0/100,000 teens 15-19, 1994-96					###	43.2/100,000 teens 15-19, 2003-05	11
Child & Teen Death (ages 1-19)	31.5/100,000 youth 1-19, 1994-96					24.7%	23.7/100,000 youth 1-19, 2003-05	6
ECONOMIC CLUSTER	83 Economic Index, 1994-96	-9.6%					91 Economic Index, 2003-05	19*

■ state change

■ county change

= zero base - cannot calculate change

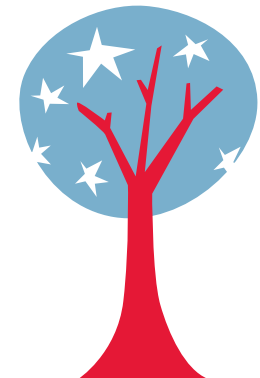
County Rank (1 = best) (77 = worst)

Changes of more than 100%—positive or negative—are graphed with broken bar

*Indicates a tie with at least one other county.

CHILDHOOD STRESS INDEX

Category / Indicator	Number	Rate	Rank
BIRTH / GENETIC / BIOLOGICAL			
Very Low Birthweight (2003-05)	1 avg annual	0.5%	7
Autism Reported on IEPs (ages 3-21, FFY 2005-07)	2 avg annual	0.6/1,000	9
ENVIRONMENTAL FACTORS			
Poverty (ages 0-17, 2004)	477	18.1%	20
Unemployment (2003-05)	n/a	3.9%	22
EXPOSURE TO TRAUMA			
FEMA Disaster Declarations (Nov 2000-Aug 2007)	7	0.4/1,000 children	28
Adverse Childhood Experiences (ACE Index, 2006/07 Kids Count)	23.6	n/a	14
ACCESS TO TREATMENT			
Untreated by DMHSAS, OJA or Medicaid (ages 9-17, FY 2005-06)			
Untreated Mentally Ill & Substance-Abusers	162 avg annual	57.9%	38
Untreated Serious Emotional Disturbance	61 avg annual	34.9%	
Suicide (ages 5-24, 2003-05)	0 avg annual	0.0/100,000	1*



Childhood Stress Rank

15

*Indicates a tie with at least one other county.

0.0%* or 0* indicates that, on average, services were provided to numbers of young clients which appear to serve all of the estimated need (prevalence) in the county

